

## Security Lock Box

71-0170B 11/2009

pg. 1

### Instructions For SLB-2-K

#### Tools Required:

Drill and Screwdriver

#### Parts List - SLB-2-K:

#### Instructions:

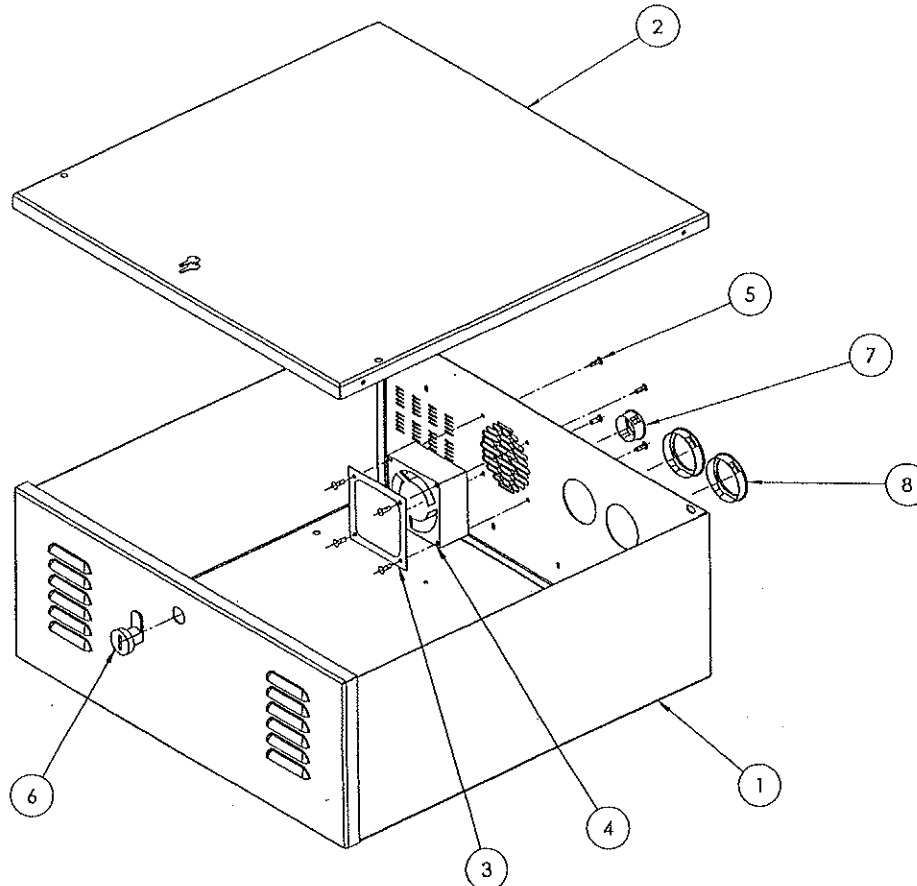
After inspecting for damage, use the key taped to top of lock box to unlock the front panel. The front panel will swing forward and the removable top panel lifts off. (Remove top panel by lifting, it slightly and sliding it to the rear to disengage pins.)

Mount the Lock Box on a sturdy, flat surface. The mounting location of the Lock Box should allow space around the perimeter of the Lock Box to insure proper ventilation. The four mounting holes on the bottom allow you to anchor it to practically any surface.

Two, 2" grommeted holes on the rear panel allow for cable entry.

A 3" whisper fan requiring 120VAC; 50-60Hz electrical power, provides proper cooling for the equipment inside.

Item No.	Component Parts	Qty.
1	WELDMENT LOCK BOX SLB-2	1
2	WELDMENT COVER SLB-2	1
3	FAN GUARD 80MM	1
4	FAN 120VAC 14/12W 50-60HZ	1
5	RIVET	8
6	CAM LOCK & NUT ASSY. W/2-205 KEYS	1
7	BUSHING SNAP 1.187"	1
8	BUSHING SNAP 2.000"	2
9	CORD FAN 18/2 4 FT. W/PLUG (NOT SHOWN)	1



[www.EMISecurity.com](http://www.EMISecurity.com)

## Security Lock Box

Instructions For SLB-2-K (Continued)

71-0170B 11/2009

pg. 2

### Dimensions and Hole Locations

