

Installation Sheet

Security Lock Box & Wall Brackets

71-0170B 11/2009

pg. 1 of 3

Instructions For SLB-2-K

Tools Required:

Drill and Screwdriver

Instructions:

After inspecting for damage, use the key taped to top of lock box to unlock the front panel. The front panel will swing forward and the removable top panel lifts off. (Remove top panel by lifting, it slightly and sliding it to the rear to disengage pins.)

Mount the Lock Box on a sturdy, flat surface. The mounting location of the Lock Box should allow space around the perimeter of the Lock Box to insure proper ventilation. The four mounting holes on the bottom allow you to anchor it to practically any surface.

Two, 2" grommeted holes on the rear panel allow for cable entry.

A 3" whisper fan requiring 120VAC; 50-60Hz electrical power, provides proper cooling for the equipment inside.

The fan filter can be easily removed for cleaning by pulling on the two tabs located on the right and left sides of the filter. To reinstall, push the tabs back into their respective holes. The filter should be held firmly in place.

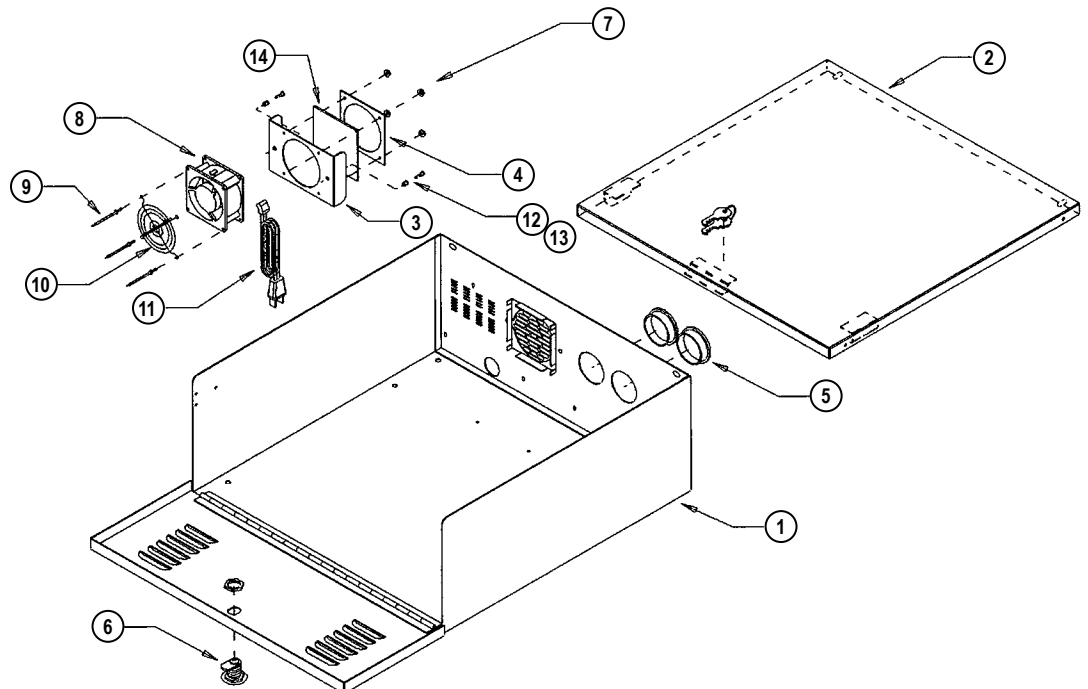
To prevent dust and grime from entering the Lock Box, the fan should not be run for prolonged periods of time without the filter in place. The fan filter should be cleaned monthly in unusually dirty environments, and every three months in normal environments.

Parts List - SLB-2-K:

Item No.	Component Parts	Qty.
1	WELDMENT LOCK BOX SLB-2	1
2	WELDMENT COVER SLB-2	1
3	PLATE FILTER 5.25X 3.50 SLB-2	1
4	PLATE FILTER 3.50X 3.50 SLB-2	1
5	BUSHING SNAP	2
6	CAM LOCK & NUT ASSY W / 2-205 KEYS	1
7	NUT 6-32 HEX	4
8	FAN 120VAC 14/12W 50-60HZ	1
9	RIVET	4
10	FAN GUARD 80MM	1
11	CORD FAN 18/2 4FT W/PLUG	1
12	GROMMET SNAP-FIT PLSTC	2
13	GROMMET SNAP-FIT PLSTC	2
14	FILTER FOAM 3.5X3.5 SQ	1

Options & Accessories:

- Wall Mount Brackets:
SLB-WMB-K
- UPS Universal Power Supply:
DVR-UPS



www.EMISecurity.com

Installation Sheet

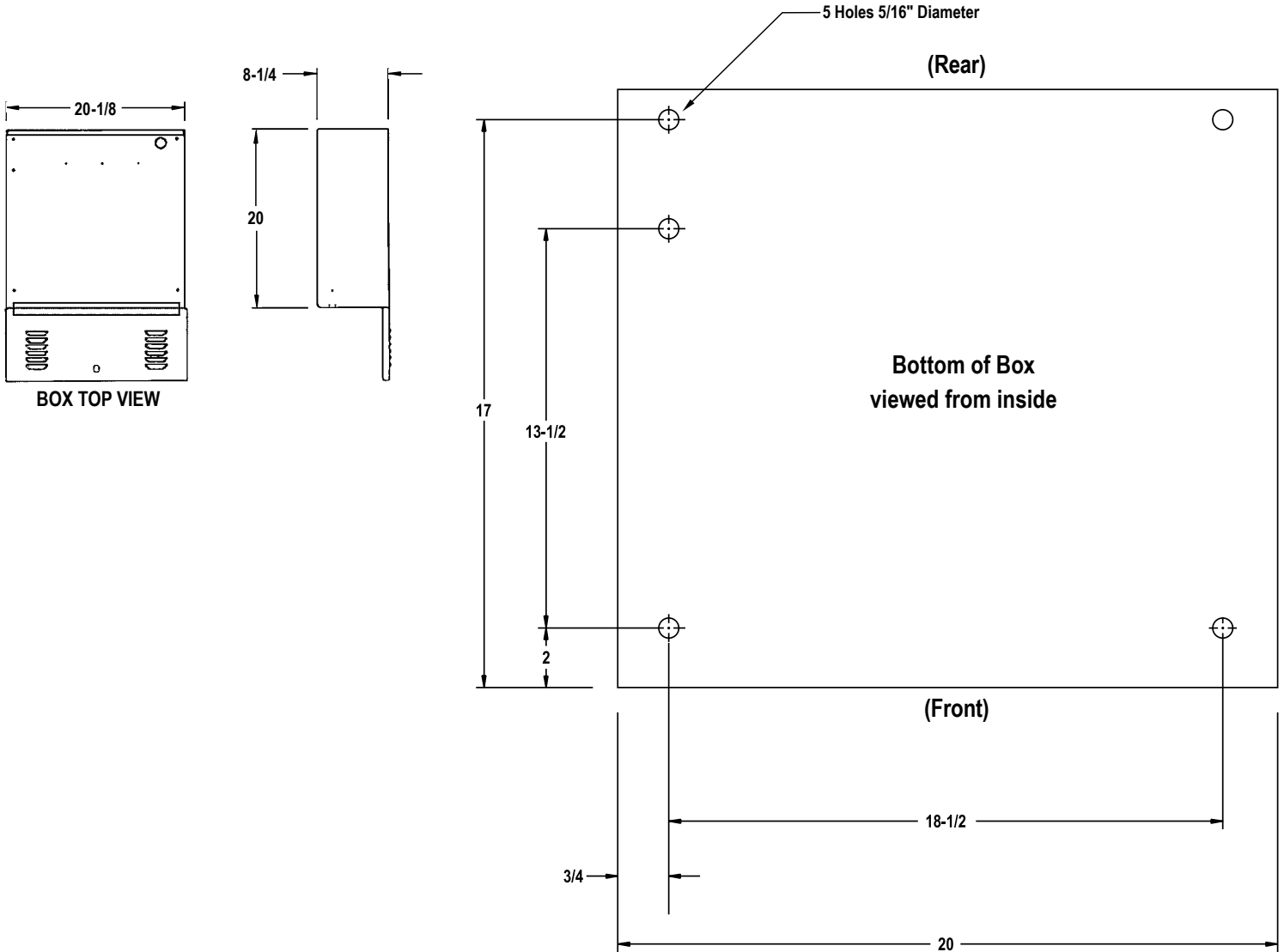
Security Lock Box & Wall Brackets

Instructions For SLB-2-K (Continued)

71-0170B 11/2009

pg. 2 of 3

Dimensions and Hole Locations



Parts List

SLB Wall Mount Brackets

71-0170B 11/2009

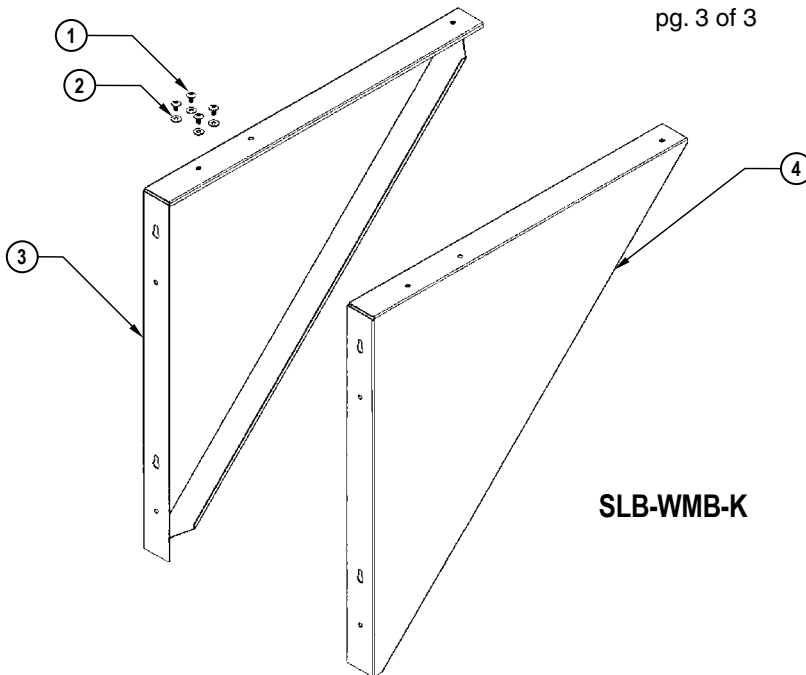
pg. 3 of 3

Instructions For SLB-WMB-K

Wall Mount Brackets designed for the SLB-2-K Lock Box

Parts List:

Item No.	Component Parts	Qty.
1	SCREW SST PAN PHLHD 10-32X.375	4
2	WASHER FL .219 X .500 X .049 SST	4
3	BRACKET WALL MOUNT LEFT, SLB	1
4	BRACKET WALL MOUNT RIGHT, SLB	1



CAUTION:

The installer is responsible for understanding the application.

The mounting hardware and surface to which the brackets are mounted must be suitable to hold the load applied. Properly sized wall anchors must be installed directly to building's structural members (studs or cross beams).

Installation Notes:

The distance between the brackets should be 18.5" for the SLB-2-K (measured from center of the left bracket's holes to center of the right bracket's holes). Be sure that hole locations on both sides are horizontally aligned.

