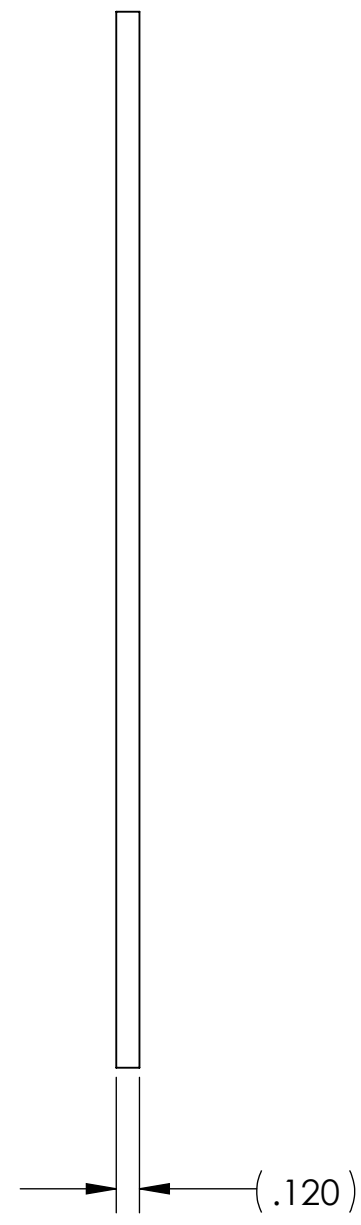
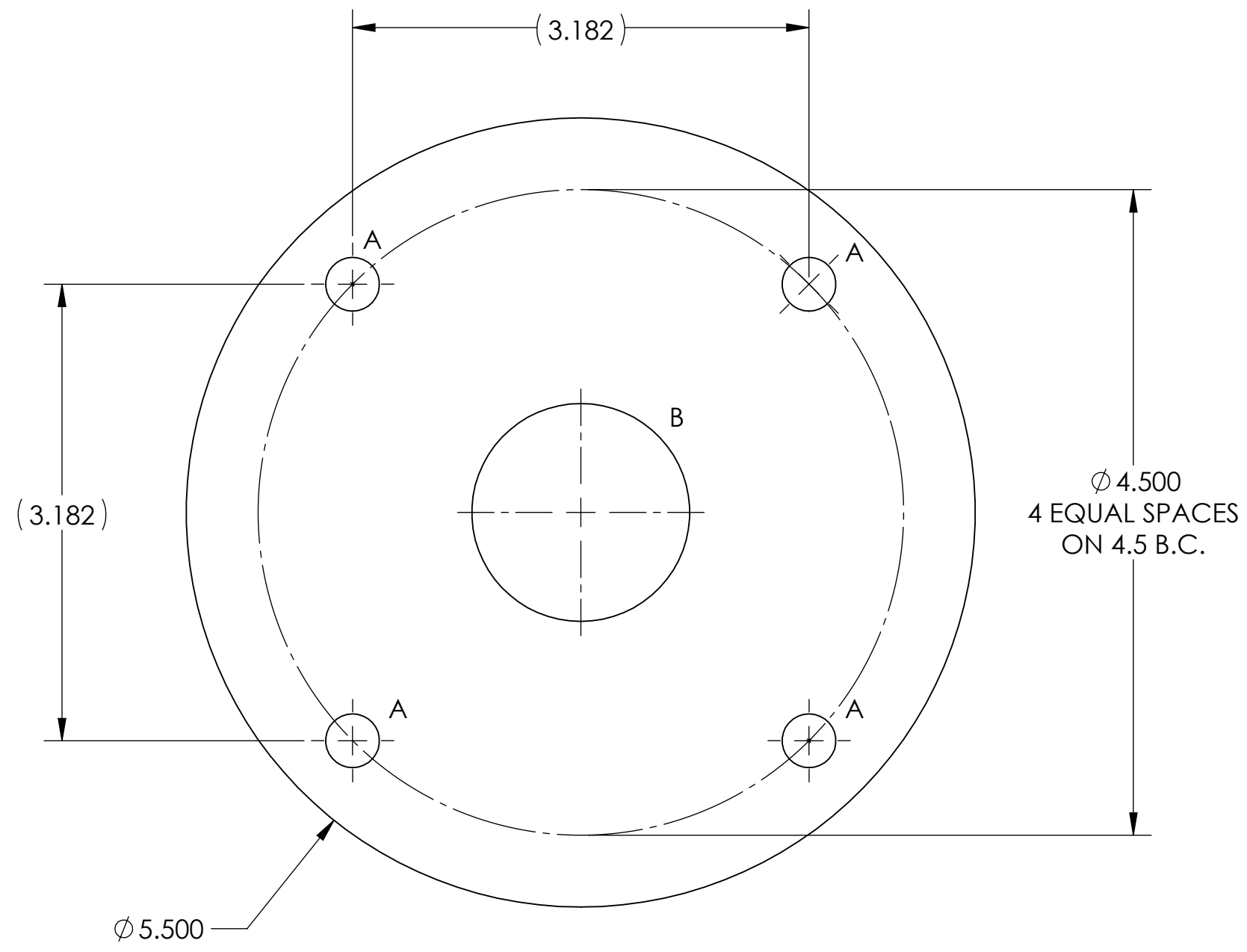
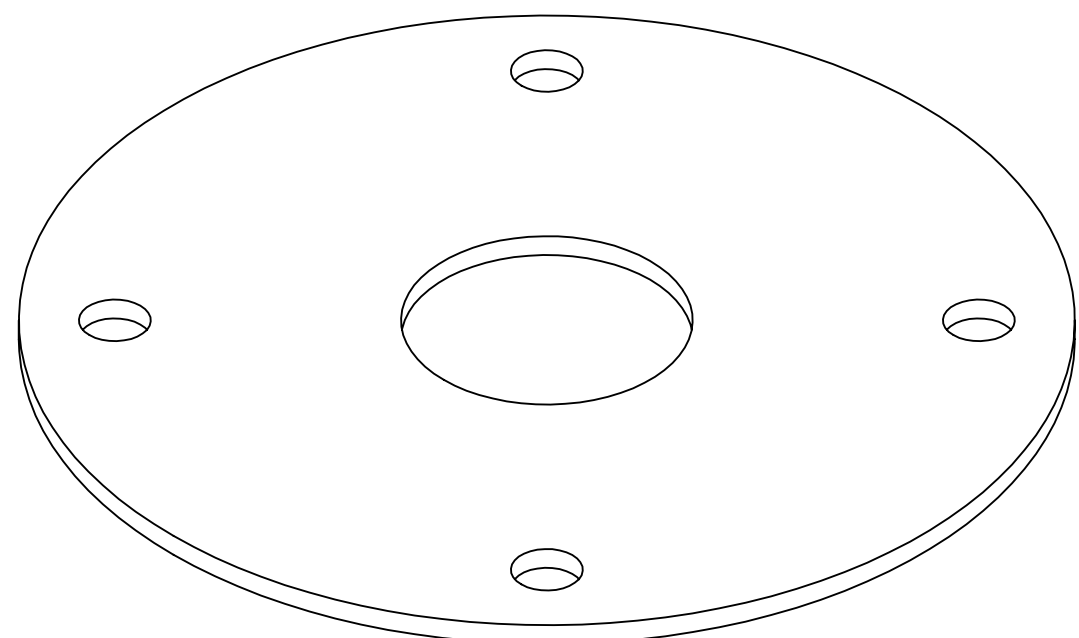


HOLE	SIZE	QUANTITY
A	$\phi .375 +.008/-.002$	4
B	$\phi 1.519 +.008/-.002$	1



PART NUMBER	MATERIAL
D40015	11 GA. (.120" THK) COLD ROLLED STEEL PART MUST BE CLEAN NO DEEP SCRATCHES

REV.	DESCRIPTION	DATE	BY
E	EC#8005 MAT'L WAS 1/4" REMOVED D40015-01000	04/16/12	SKS
D	REVISED DRAWING FORMAT	03/26/12	SKS

DATE	SCALE	CHECKED
03/26/12	N.T.S.	
EMI SECURITY ™		
DESC FLANGE, W/P		MATL SEE NOTE
DWG NO D40015		REV E

THIRD ANGLE PROJECTION

Sheet1 OF 1

TOLERANCES UNLESS OTHERWISE SPECIFIED

$\pm .020$ ANGLES $\pm 0^{\circ}30'$

FLAT VIEW $\pm .015$

NOTE: DIMENSIONAL TOLERANCES ARE NON-ACCUMULATIVE ON FLAT VIEW

THIS DOCUMENT AND THE INFORMATION SHOWN ON IT ARE CONFIDENTIAL AND CANNOT BE COPIED IN WHOLE OR IN PART WITHOUT THE EXPRESS WRITTEN CONSENT OF EMI SECURITY.

CAD FILE NAME: D40015.SLDDRW