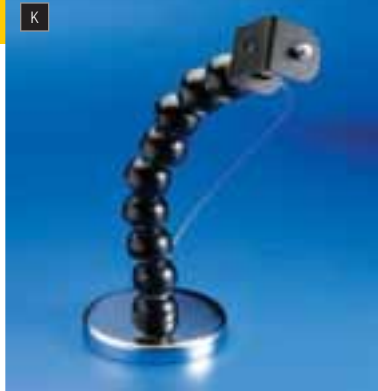


## CCUFM-M-K

### Magnetic Base Camera Flex Mount

The CCUFM-M-K Universal Flex Mount can be used with most cameras and can support a combined camera lens weight of 3 lbs. It is designed to be used primarily as a temporary mount and can be attached to any flat steel surface by a magnetic base with an 80 lb. straight pull. With no drilling or fastening hardware required, this simple, lightweight mount assures quick and easy installation. The unit is furnished with a steel tether cable to prevent the camera from falling. Due to its flexibility and maneuverability this mount allows the camera and lens to be placed at practically any angle.



#### FEATURES AND ADVANTAGES

- Quick and easy installation and removal
- Tether cable prevents camera from falling
- Unlimited camera positioning

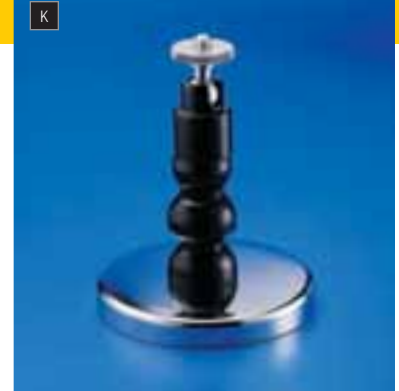
#### SPECIFICATIONS

**Application:** Temporary camera mount  
**Dimensions:** Approximately 8-1/2" long  
**Material:** Flexible ABS plastic segments with 80 lb. rated magnetic base  
**Maximum recommended load:** Can support camera/lens weight up to 3 lbs.  
**Color & Finish:** Black

## CCUFM-BS1-M-K

### Magnetic Base Camera Tilt Mount w/ Ball Socket Head

The CCUFM-BS1-M-K is a short version of the CCUFM-M-K with a BS-1 ball socket camera mounting head. Designed primarily to support camera installations for ATM machines, it can be used with most cameras and will hold a combined camera lens weight of 20 lbs. It can be attached to any flat steel surface by a magnetic base with an 80 lb. straight pull. With no drilling or fastening hardware required, this simple, lightweight mount assures quick and easy installation.



#### FEATURES AND ADVANTAGES

- Low profile designed for ATM surveillance use
- Quick and easy installation and removal
- Swivel head ball socket

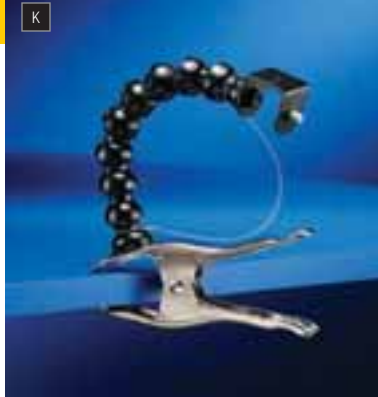
#### SPECIFICATIONS

**Application:** Temporary camera mount  
**Dimensions:** Approximately 4" long  
**Material:** ABS plastic segments with 80 lb. rated magnetic base  
**Maximum recommended load:** Can support camera/lens weight up to 20 lbs.  
**Color & Finish:** Black

## CCUFM-C-K

### Clip Base Camera Flex Mount

The CCUFM-C-K Universal Flex Mount can be used with most cameras and can support a combined camera lens weight of 3 lbs. It is designed to be used primarily as a temporary mount and can be attached to countless locations by its heavy duty spring clip base. With no drilling or fastening hardware required, this simple, lightweight mount assures quick and easy installation. The unit is furnished with a steel tether cable to prevent the camera from falling. Due to its flexibility and maneuverability this mount allows the camera and lens to be placed at practically any angle and is workable on many unusual surfaces.



#### FEATURES AND ADVANTAGES

- Quick and easy installation and removal
- Tether cable prevents camera from falling
- Unlimited camera positioning

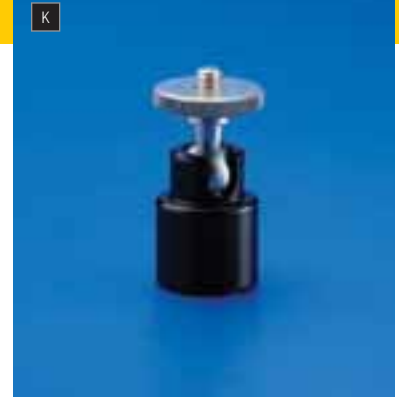
#### SPECIFICATIONS

**Application:** Temporary camera mount  
**Dimensions:** Approximately 8-1/2" long  
**Material:** Flexible ABS plastic segments with a steel spring clip  
**Maximum recommended load:** Can support camera/lens weight up to 3 lbs.  
**Color & Finish:** Black

## BS-1

### 1" Swivel Head Ball Socket Mount

The BS-1 is a universal head ball socket designed for tamper-resistant mounting of cameras. The mount head is adjustable from a level position to a tilt angle of 90°. The mounting head will rotate 360° and lock in any position with an Allen set screw. The socket can be adapted to almost any equipment that requires a wide range of movement by removing the washers and a hardened steel stud.



#### FEATURES AND ADVANTAGES

- Wide adjustment range
- Tamper-resistant

#### SPECIFICATIONS

**Application:** Indoor camera mount  
**Dimensions:** 1" high  
**Material:** Aluminum  
**Maximum recommended load:** 20 lbs.  
**Color & Finish:** Black